

2022 Adult HUSKY Health Membership Trends and Profiles

January 2024

Agenda

1	Population Profile Overview and Live Demonstration	2	Drilldown into HUSKY Health Membership
3	Total HUSKY Health Population	4	Adult HUSKY Health Membership
5	Adults with Behavioral Health (BH) Service Use	6	Adults with BH Outpatient Service Use
7	Adults with BH Service Use and Multiple Inpatient Stays	8	Adults with BH Service Use and Frequent ED Visits
9	3.7 Withdrawal Management (3.7WM) Utilization	10	Questions and Discussion

Chapter

01

Population Profile and Live Demonstration

Connecticut HUSKY Health Population Profile

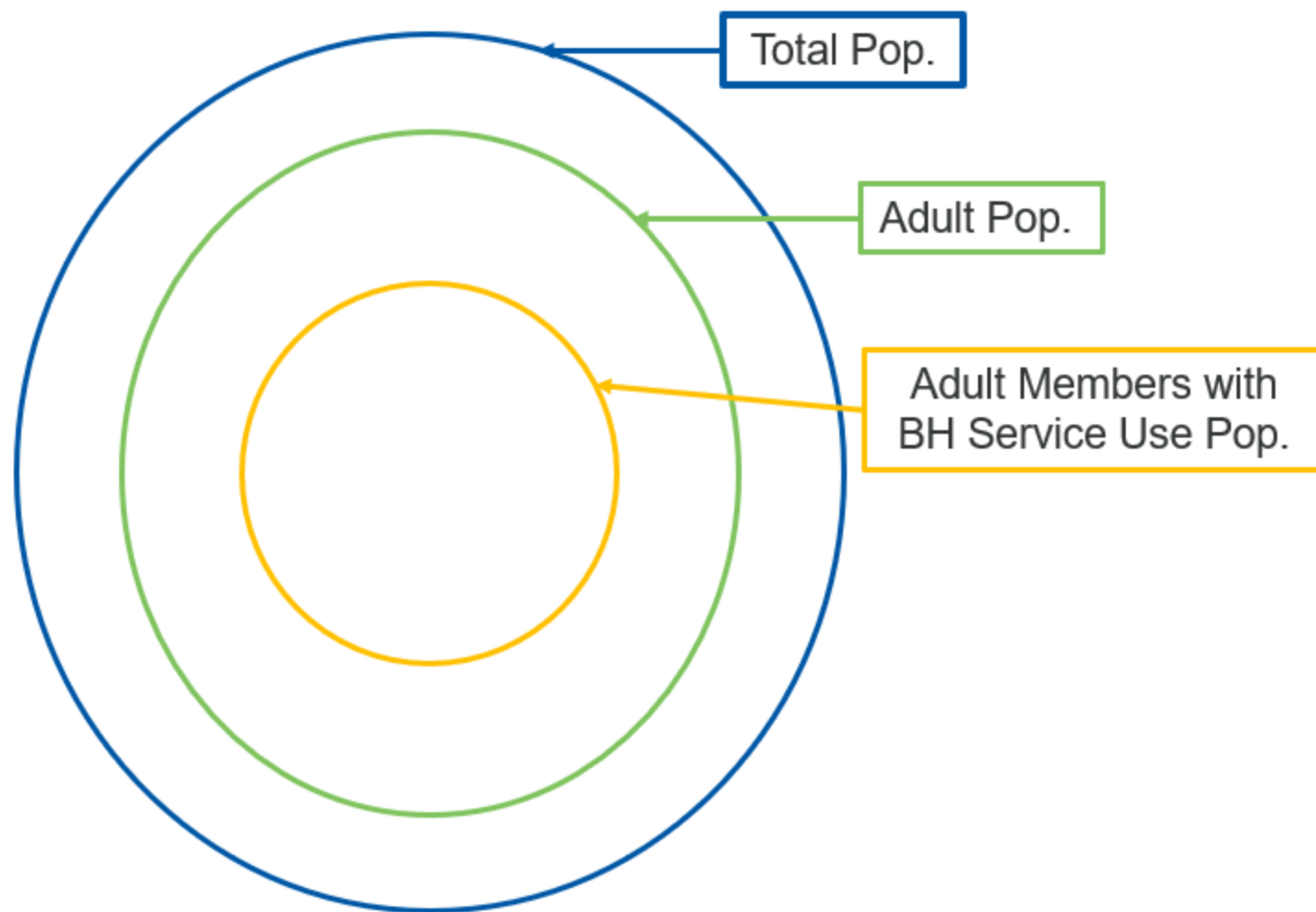
- The Connecticut HUSKY Health Population Profile dashboards were designed to enhance the understanding of and explore information related to Connecticut HUSKY Health members.
- The interactive dashboards include data regarding demographics, behavioral health (BH) and medical service utilization, diagnosis and prescription prevalence rates, methadone claims and total spend for one calendar year.
- It focuses on descriptors and/or events with a minimum of one occurrence. This data visualization is not longitudinal and does not focus on a sequence of events.

Chapter

02

Drilldown into HUSKY Health Membership

Drill Down Strategy

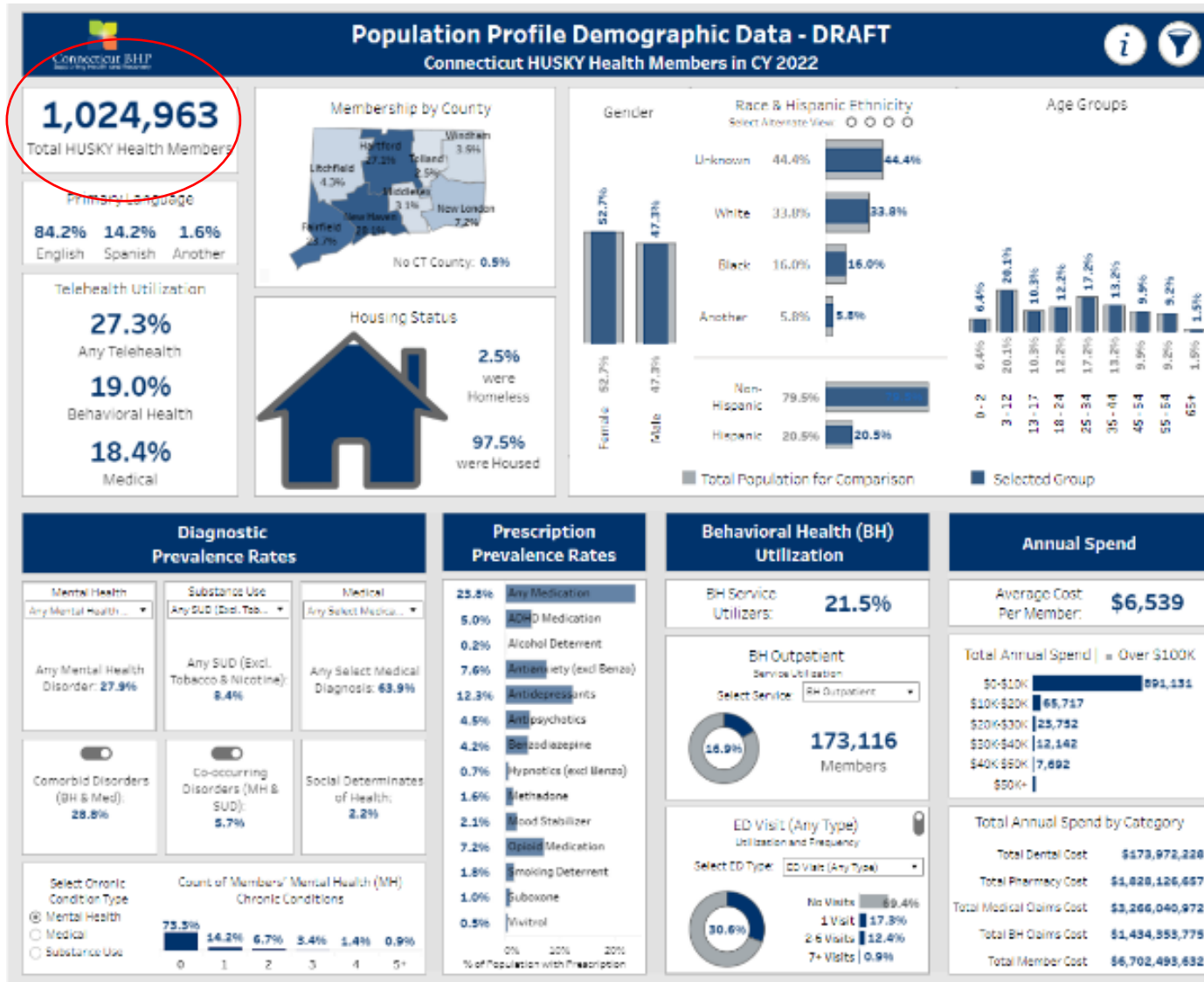


Chapter

03

Total HUSKY Health Population

Total HUSKY Health Membership



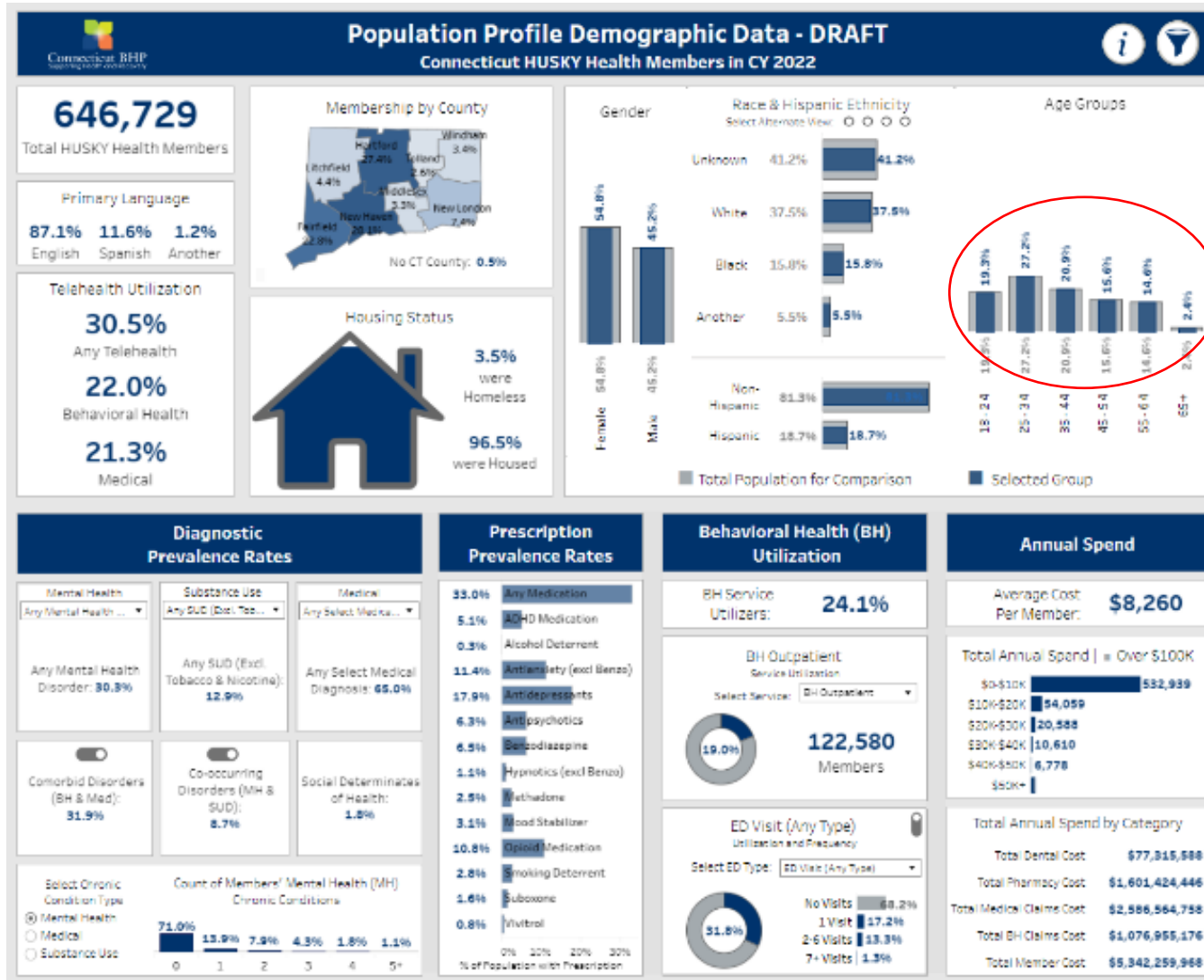
- 2022 saw a nearly 50,000 increase in membership, to over a million members (~ 60% adults)
- ~ 21% (n=220,193) of all HUSKY Health members utilized a BH service
- Behavioral Health Telehealth is most frequently utilized, accounting for nearly 19% (n=194,953) of the entire population
- Average annual expenditure per member is \$6,539

Chapter

04

Adult HUSKY Health Membership

Adult HUSKY Health Membership



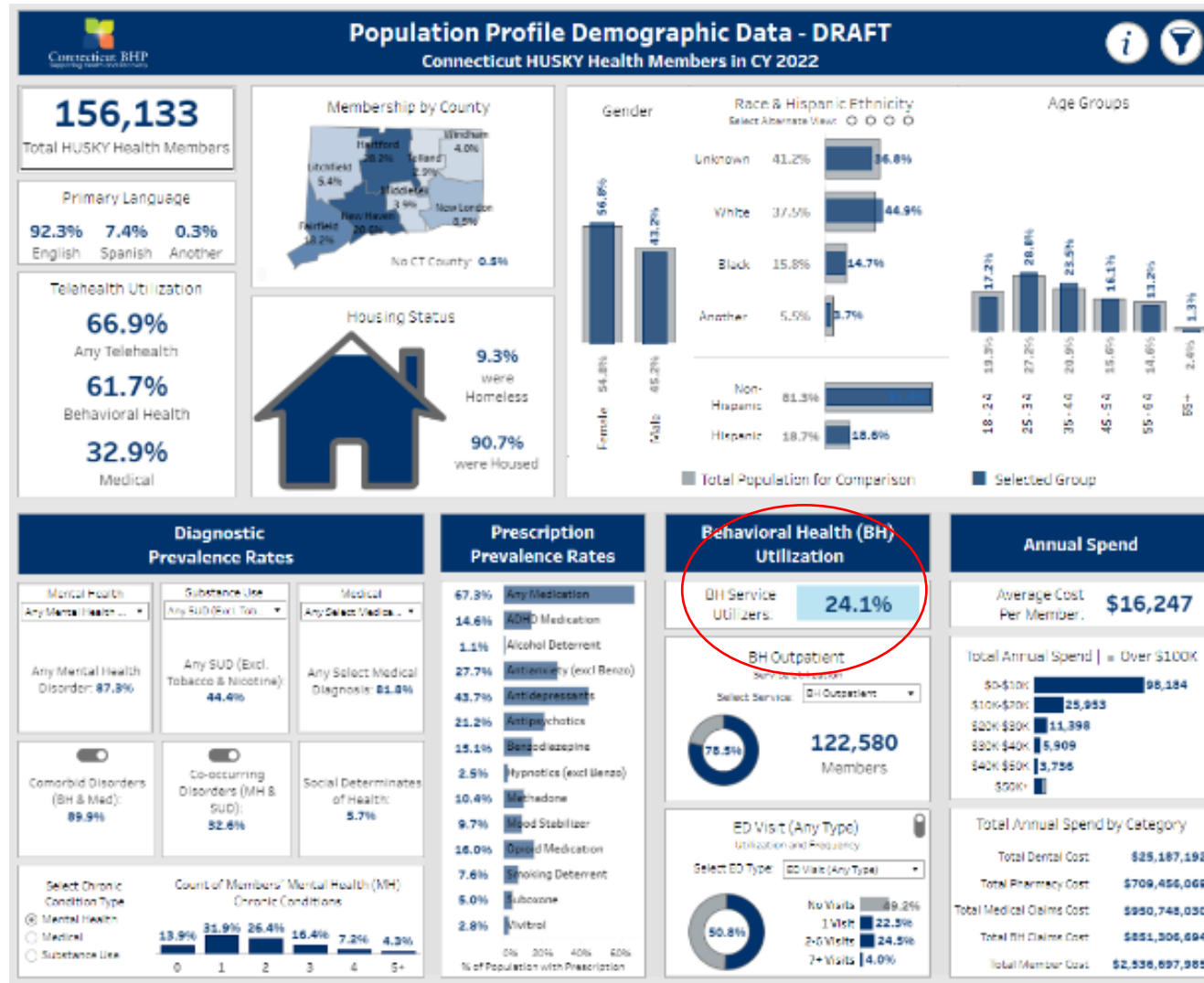
- Nearly 40,000 increase in Adult HUSKY Health population.
- Just under 650,000 members.
- Demographic data remained consistent between 2021 and 2022 despite increase in membership.
- A higher percentage of adults (24.1%; n=156,133) have utilized a BH service than the total population (21.5%; n=220,193).
- Average annual expenditure per member is higher at \$8,260 vs. \$6,539.
- Adult expenditures for BH claims accounts for 75.08% of the total for BH claims.

Chapter

05

Adults with Behavioral Health (BH) Service Use

Adults with Behavioral Health (BH) Service Use



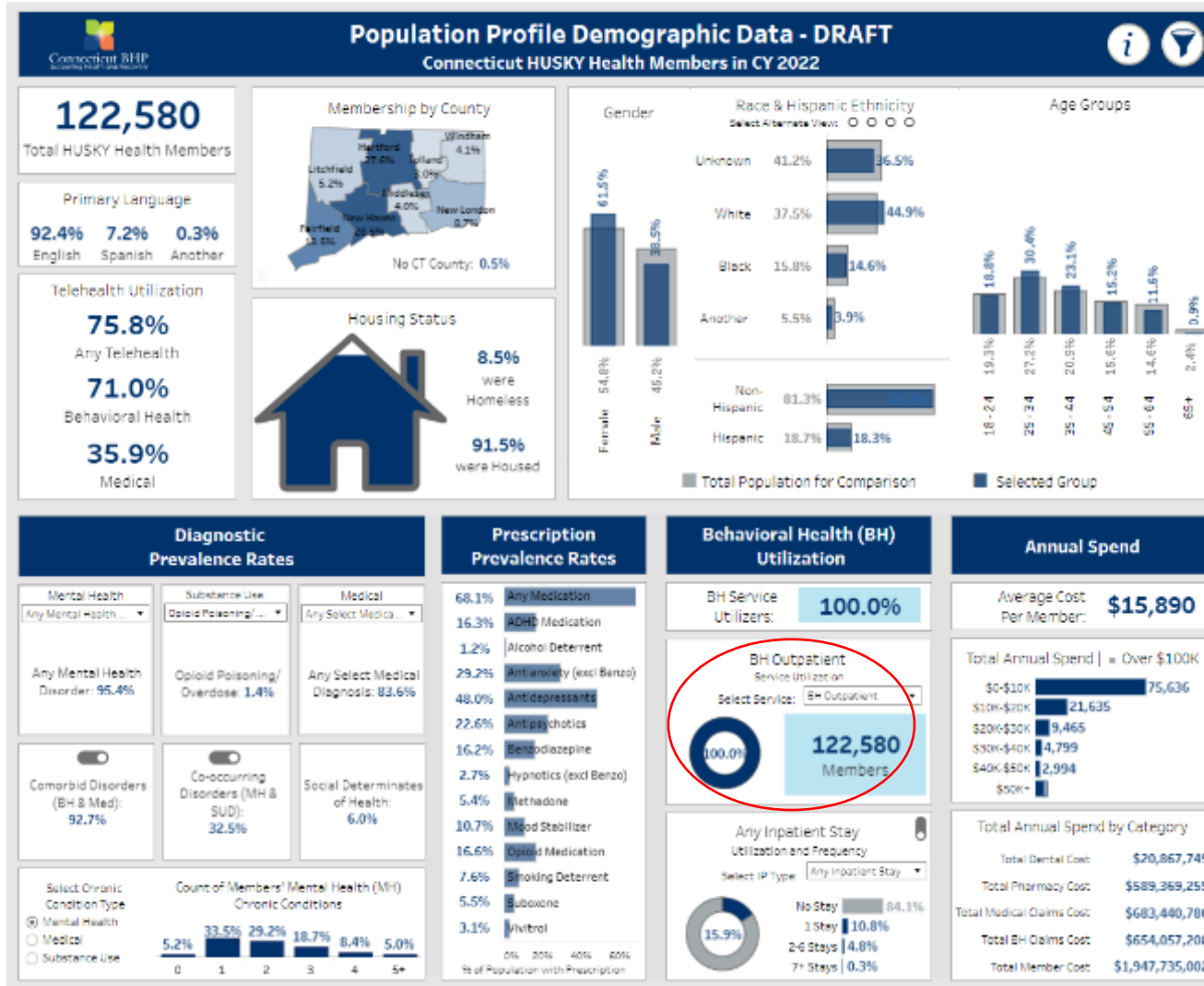
- Approximately 156,000 members had at least one BH visit.
- Over 33,500 did NOT have an outpatient visit.
- Disproportionately there were more individuals who identified as:
 - Primary English speaking
 - Female
 - White
 - Unhoused
 - Between the ages of 25-44
- Nearly twice the average adult HUSKY Health annual expenditure (\$16,247 vs. \$8,260).

Chapter

06

Adults with BH Outpatient Service Use

Adults with BH Outpatient Service Use



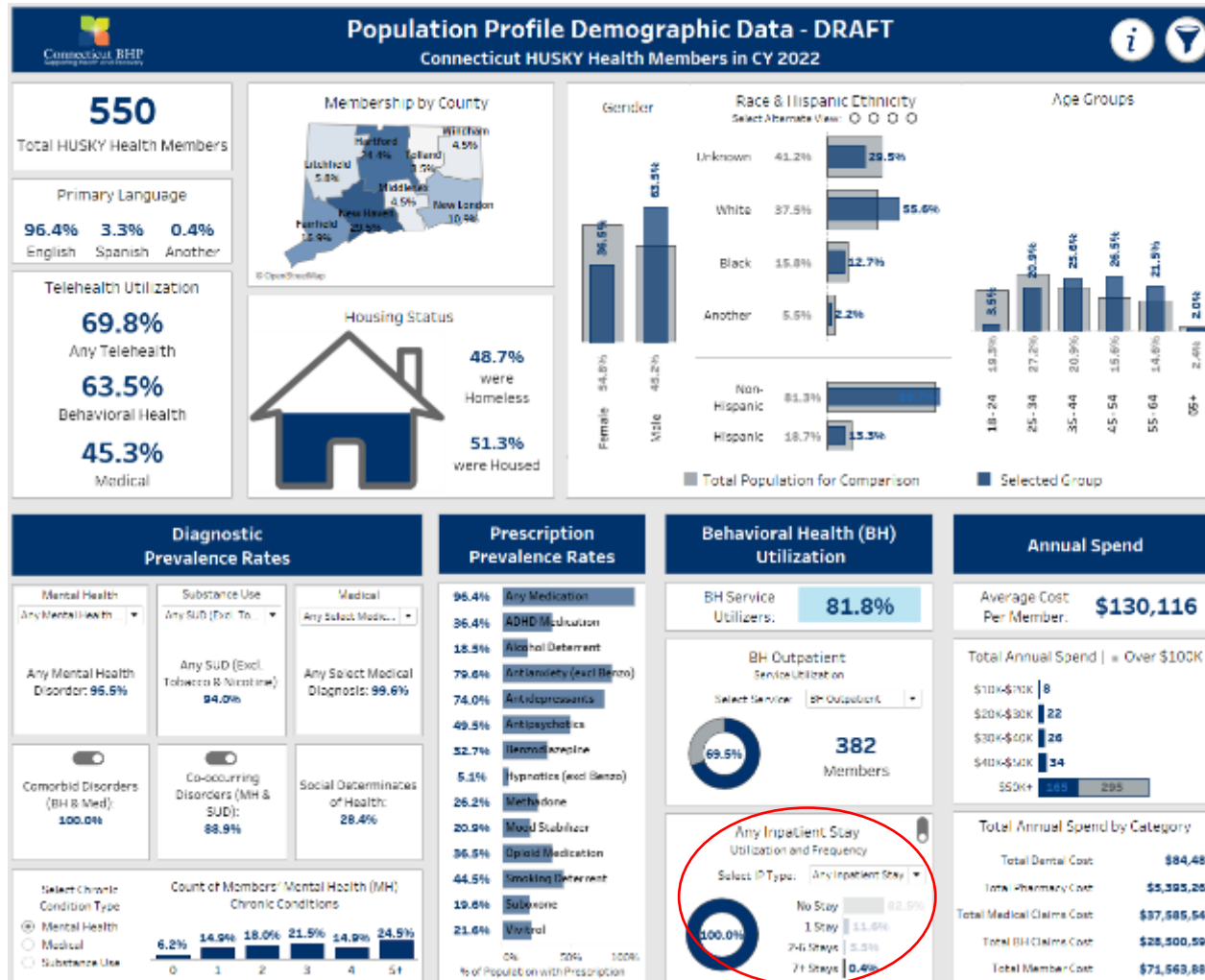
- Approximately 122,000 members utilized outpatient services.
- Tolland, Middlesex and Litchfield Counties had lowest prevalence of BH Outpatient Service Utilization.
- Disproportionately there were more individuals who identified as:
 - Primary English speaking
 - Female
 - White
 - Unhoused
 - Between the ages of 25-44
- Nearly twice the average annual expenditure of the adult HUSKY Health population (\$15,890 vs. \$8,260).

Chapter

07

Adults with BH Service Use and Multiple Inpatient Stays

Adults with BH Service Use and Multiple Inpatient Stays



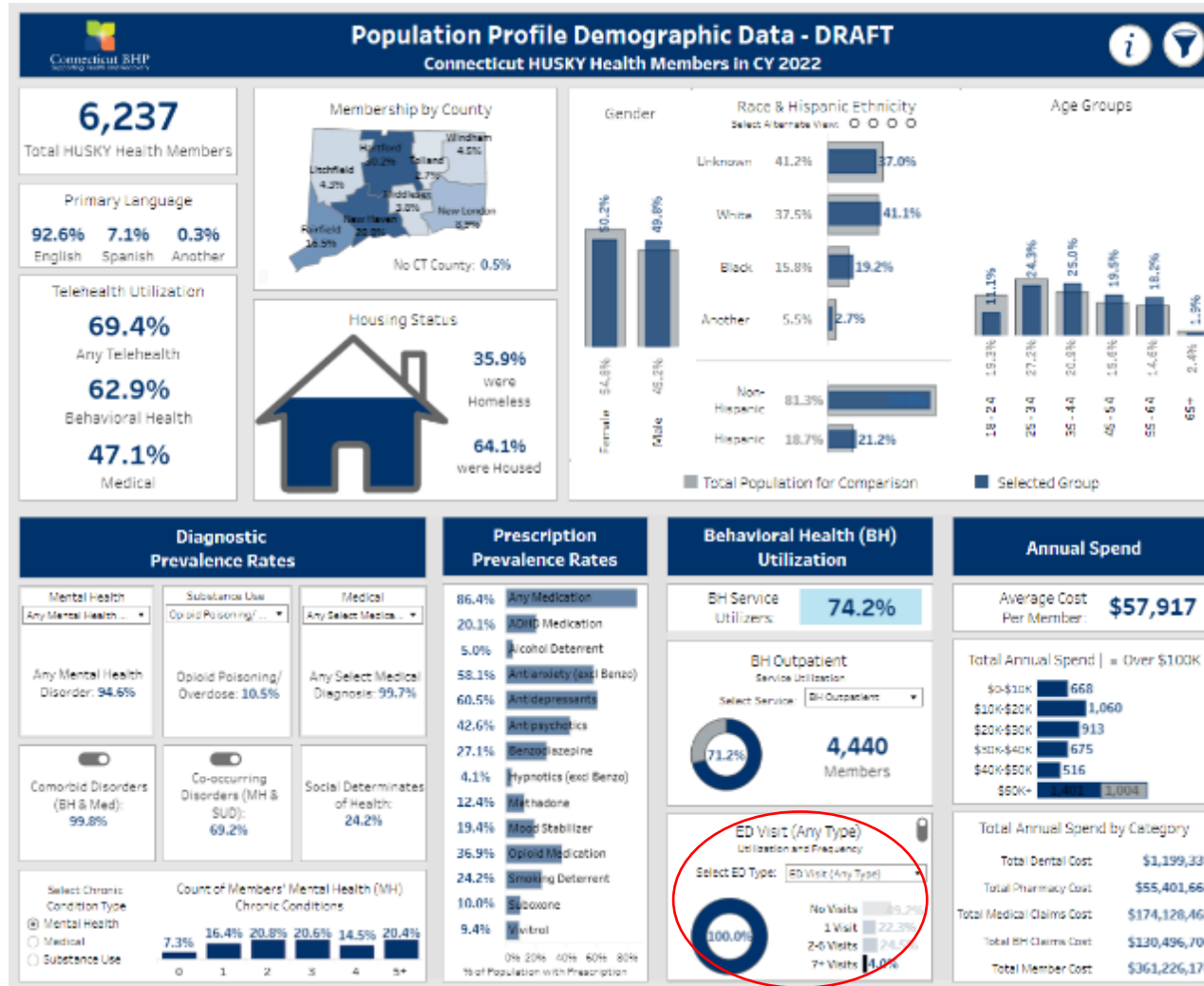
- 550 members had 7 or more inpatient visits.
- Nearly 50% (n=268) were unhoused as compared to 3.5% (n=22,514) of total adult HUSKY Health population.
- Significantly higher prevalence of Social Determinants of Health Dx compared to all BH service utilizers. (28%;n=156 vs ~6%;n=8,964)
- 94% (n=517) diagnosed with co-occurring SUD vs. 44% (n=69,344) of all BH service utilizers
- Overdose rate of 15% (n=84) as compared to .5% (n=3,195) in the adult HUSKY Health population.
- Significantly higher average annual expenditure as compared to adult HUSKY Health annual expenditure (\$130,116 vs. \$8,260).

Chapter

08

Adults with BH Service Use and Frequent ED Visits

Adults with BH Service Use and Frequent ED Visits



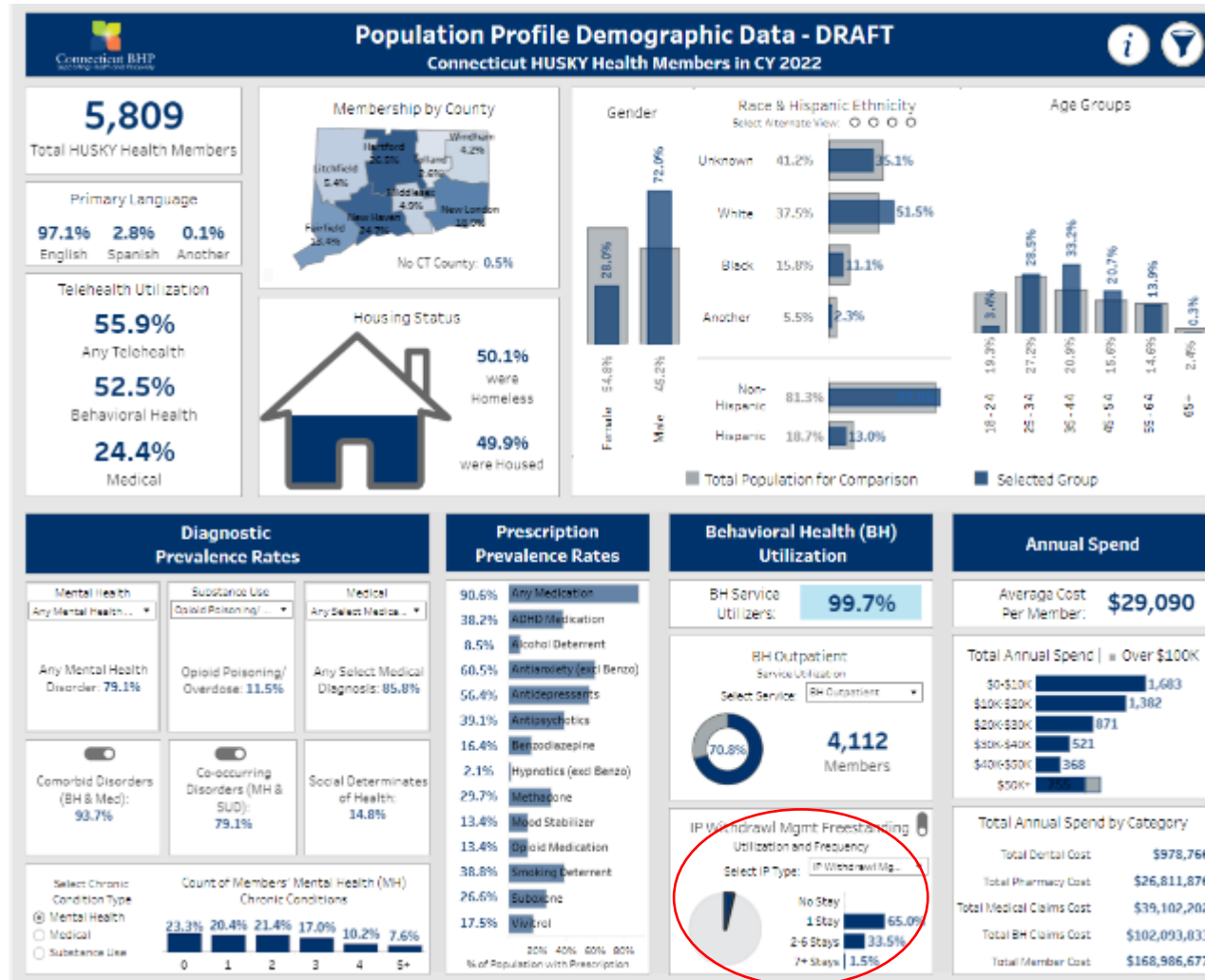
- 6,237 members had 7 or more ED visits.
- Over 35% (n=2,236) were unhoused as compared to 3.5% (n=22,514) of adult HUSKY Health population.
- Significantly higher prevalence of Social Determinants of Health Dx compared to all adult BH service utilizers (24%; n=1,512 vs ~6%; n=8,964).
- Overdose rate of 10.5% (n=654) as compared to .5% (n=3,195) in the adult HUSKY Health population.
- Significantly higher average annual expenditure as compared to adult HUSKY Health annual expenditure (\$57,917 vs. \$8,260).

Chapter

09

3.7 Withdrawal Management (3.7WM) Utilization

3.7 Withdrawal Management (3.7 WM) Utilization



- 5,809 members had at least one 3.7 WM episode of care
- Over 50% (n=2,911) were unhoused as compared to 3.5% (n=22,514) of the adult HUSKY Health population
- Disproportionately identified as male, white and between ages of 35-54
- Overdose rate of 11.5% (n=669) as compared to .5% (n=3,195) in the adult HUSKY Health population
- Significantly higher average annual expenditure as compared to adult HUSKY Health annual expenditure (\$29,090 vs. \$8,260)

Chapter

10

Questions and Discussion

Thank You

Contact Us

 877-552-8247

 www.ctbhp.com

 daniel.langless@carelon.com